

# FIELD SERVICE AUTOMATION SOFTWARE FOR ENVIRONMENTAL SERVICES PROVIDERS

Simplify Operations, Maintain Compliance, and Drive Sustainability

From monitoring air and water quality to managing waste disposal and maintaining environmental assets, your field technicians handle a wide range of critical tasks every day. That's why environmental service providers rely on Field Squared. With accurate real-time GPS tracking, optimized scheduling and routing, and complete work order management, Field Squared equips you with the tools to operate more efficiently, comply with regulations, and deliver exceptional service while meeting sustainability goals.

Field Squared is the industry's first unified Field Service Automation Platform. As a cloud-based SaaS solution, Field Squared allows enterprises to automate and streamline their field service operations and processes, from the field and corporate office to back-office systems in a unified platform.

## Key Benefits

Simplify compliance tracking.

Optimize resource allocation.

Enhance field efficiency.

Minimize environmental impact.

## Key Capabilities

Compliance Tracking

Environmental Asset Management

Real-Time Field Insights

Mobile Data Collection

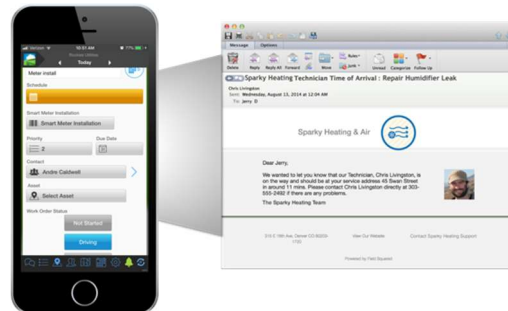
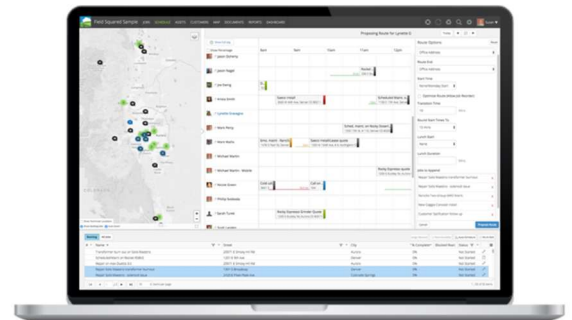
Offline Work Support

Integrated Reporting Systems

Advanced Route Planning

## Effortless Scheduling, Dispatching and Route Optimization

- Schedule, track and create work orders, assets and customers based on location
- Reduce truck rolls and improve first-time fix rate (FTFR)
- Create recurring maintenance schedules over multiple days and multiple crews



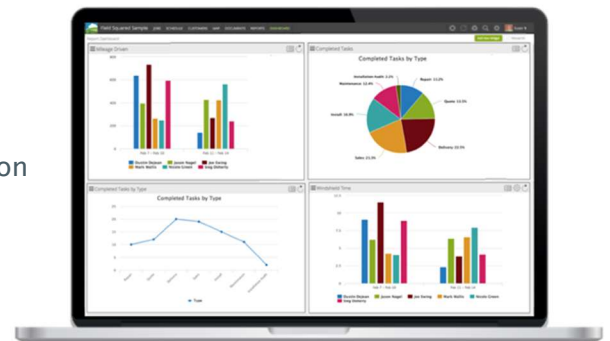
## Improve Your Field Service Customer Experience

- Don't keep customers waiting, leverage real-time notifications to alert them of a technician's status
- Easily view customer details overlaid on a map
- Email customers from the job site with work order-related documents

## Real-Time Analytics, Reporting & Business Intelligence

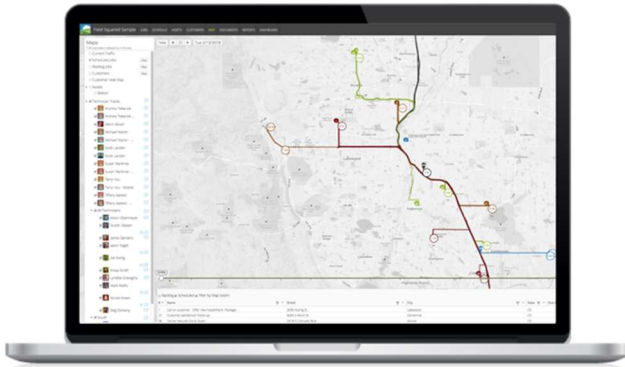
- Analyze asset metrics to optimize installations or maintenance and eliminate unprofitable assets
- Utilize out-of-the-box reports, including mileage, travel time, time site, team summary, and more
- Rank sites by correlating on-site job time to asset performance

on



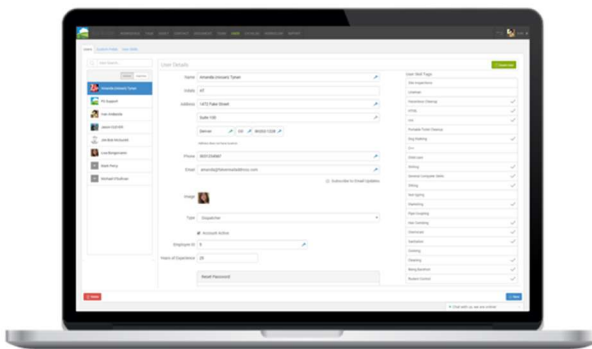
### Increase Field Data Capture Accuracy

- Capture field data and automate business processes with digital Smart Forms
- Online and offline availability syncs all changes and data when connection is restored
- Easily include photos, markup, annotations, and site sketches with work orders and assets
- Pull lookup values and catalogues from back-office systems



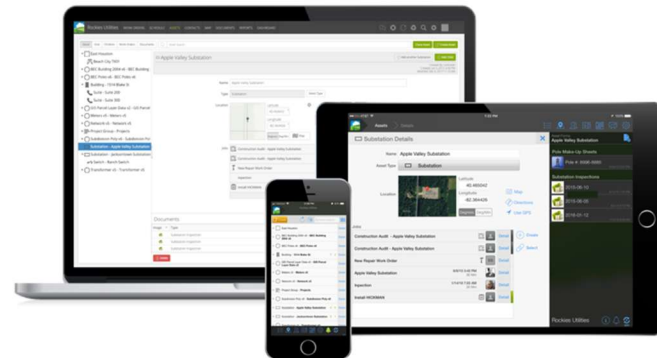
### Manage and View Assets in the Field

- Easily view assets on a map
- Track on-site history of activity for every asset
- Make better decisions about work orders by with configured and installed data
- Capture accurate state of an asset in the field as- built vs bill of materials (BOM)
- Integrates with back-office systems, such as Esri ArcGIS, CRM, OMS, ERP, and more



### Track Work Orders and Crews in Real-Time

- Enhance first call resolution performance metrics
- Know where your technicians spend their day, with real-time GPS location tracking
- Access a historical replay of technician locations for auditing and safety purposes
- Quickly find the nearest technician for emergency maintenance



### Assign Work Orders with Skill Tagging

- Easily create job types and skills and assign technicians to associated work orders
- Enable automated alerts before certifications or training requirements expire
- Effortlessly match proper skill sets to work orders, increasing work order completion rates

Thousands of people use Field Squared every day. Join the Crowd.

